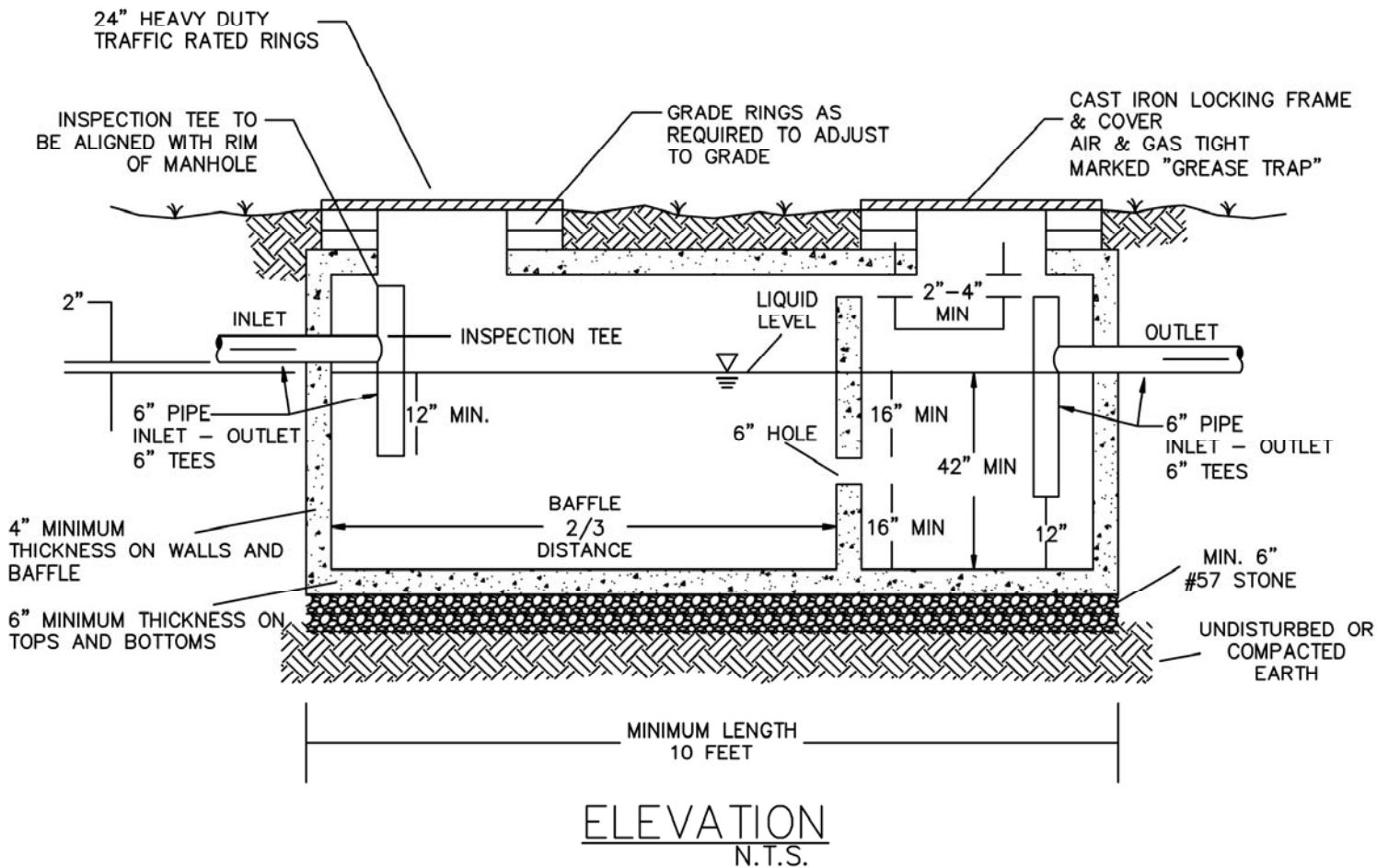


REVISIONS			
REV	DESCRIPTION	DATE	APPROVED



NOTES:

MINIMUM TANK CAPACITY IS 1,500 GALLONS, MAXIMUM TANK CAPACITY IS 3,000 GALLONS

CONCRETE = 4,500 PSI

INTERCEPTOR SHALL COMPLY WITH AASHTO H-20 STANDARDS

INLET AND OUTLET BOOTS REQUIRED

INSPECTION REQUIRED BY WATER SYSTEM PRIOR TO COVERING

RUBBER SEALANT MUST BE USED ON SLIDE IN BAFFLES

**PAULDING COUNTY, GEORGIA
 WATER AND SEWER SYSTEM
 TELEPHONE (678) 224-4086
 FAX (678) 224-4486**

**TYPICAL SEWER DETAIL
 COMMERCIAL GREASE TRAP**

SCALE: NTS	DATE: DECEMBER 16, 2013	DWG. NO. S12	REV
------------	-------------------------	--------------	-----